



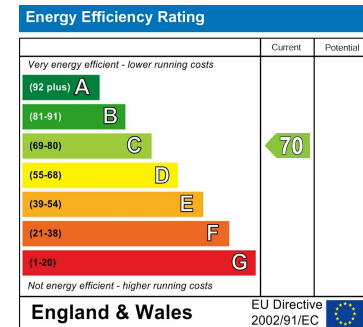
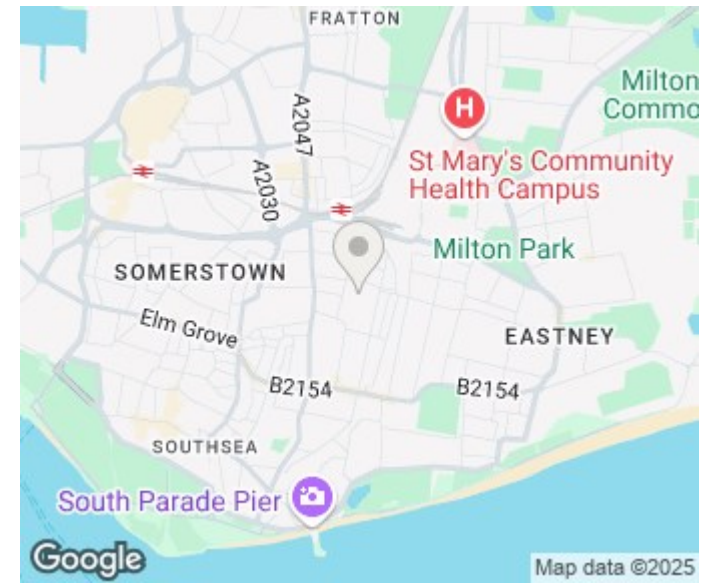
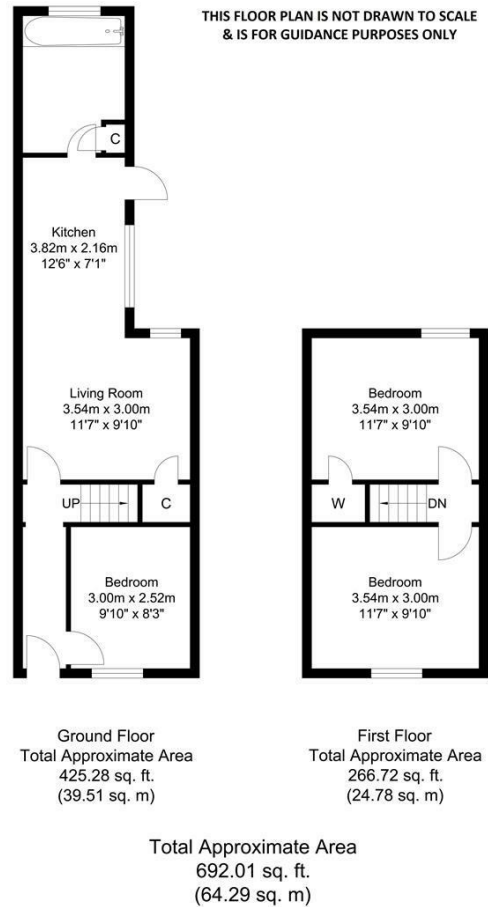
83 LONDESBOROUGH ROAD

PORTSMOUTH, PO4 0EU

£239,995
FREEHOLD

Located with in the requested residential terraced district of Central Southsea, this mid terraced house can be offered with vacant possession and comprises Front reception room, open plan kitchen - dining room, modernised bathroom and two double bedrooms to the upper floor. Features include a westerly aspect rear town garden. Internal viewing essential. Np Forward Chain.





Agents Note: Whilst every care has been taken to prepare these particulars, they are for guidance purposes only. All measurements are approximate and are for general guidance purposes only and whilst every care has been taken to ensure their accuracy, they should not be relied upon and potential buyers/tenants are advised to recheck the measurements

Southsea Office Sales
97 Albert Road
Southsea
Hampshire
PO5 2SG

02392 830888
sales@christieuk.com
www.christieuk.com

